

TAKE INTO USE IN ONLY
5
MIN
↑



TESTED
& AUDITED
ACCORDING TO ISAE 3000

TOSIBOX®

Lock 200 Quick Start Guide v1.4

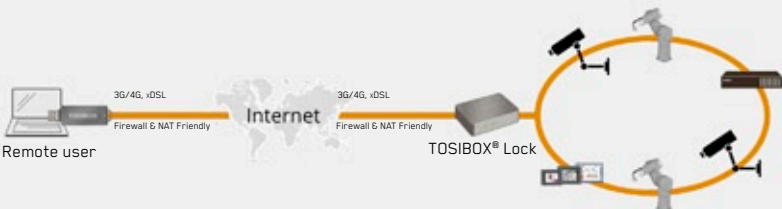
Copyright © Tosibox Oy, 2015

1 Serializing the Lock and Key



1. Connect the AC adapter to the Lock and wait for 2 minutes.
2. Serialize the Key to the Lock by inserting the Key into the USB port of the Lock. When the LED on the Key turns off or the Info LED in Lock front panel stops blinking, the serialization is complete. This procedure takes approx. 10 seconds.
3. Go to **2a** if deploying into broadband networks or **2b** if deploying into mobile networks. If deploying Locks as DHCP client into existing networks, please see the TOSIBOX® user manual.

2a Deploying into Broadband Networks




1. Connect an internet-connected ethernet cable to the Lock's WAN port .
2. Plug the devices into the Lock's LAN ports (LAN 1-3). If the devices have static IP addresses, *Deploying the Lock in the TOSIBOX® user manual.*

2b Deploying into Mobile Networks



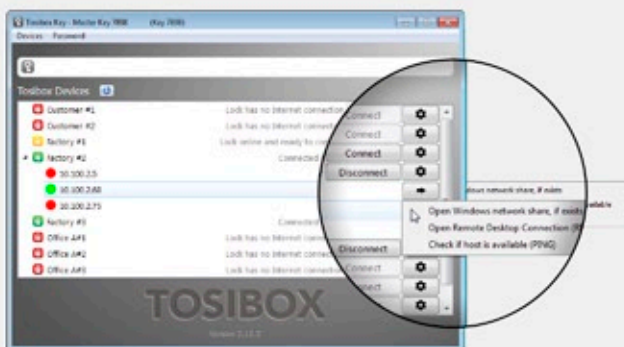
USB modem



1. Connect the computer to the Lock's service port  with an ethernet cable.
2. Type `http://172.17.17.17` into your browser's address field to access the Lock's user interface. Log in using *Admin*. The password can be found on the bottom of the Lock. Select *Network* → *USB Modem* → enter PIN code if necessary. Click *Save*.
3. Plug a supported USB Modem into the USB port of the Lock.
4. Plug network devices into the Lock's LAN ports (LAN 1-3). See *Deploying the Lock* in the user manual for static IP configurations.
5. Verify on the status page of the Lock user interface that internet connection is ok.

For more information and latest supported modem models visit: help.tosibox.com.

3 Using the Key

Insert the TOSIBOX® Key into the USB port of your computer to install the Key software.



The TOSIBOX® Key user interface illustrated above shows all Lock devices serialized to the Key and the network devices connected to them. For more options click  or  icon.



The Lock is connected to the Internet and the Key has a remote connection to the Lock.



The Lock is connected to the Internet, but the Key doesn't have a remote connection to the Lock.



The Lock is not connected to the Internet.

TOSIBOX®

EU Declaration of Conformity

I hereby declare that this product complies with the essential requirements of European Directive 1999/5/EC (R&TTE). The product is labeled with the CE mark.

This product is Listed by UL. Representative samples of this product have been evaluated by UL and meet applicable safety standards.

In Oulu, 10.10.2015
Tosibox Oy
Tero Lepistö, CEO



Proc. Cont. Eq
E474664



TOSIBOX® Mobile Client



help.tosibox.com



Download TOSIBOX® user manual
[www.tosibox.com/
Lock_200_manual_en.pdf](http://www.tosibox.com/Lock_200_manual_en.pdf)