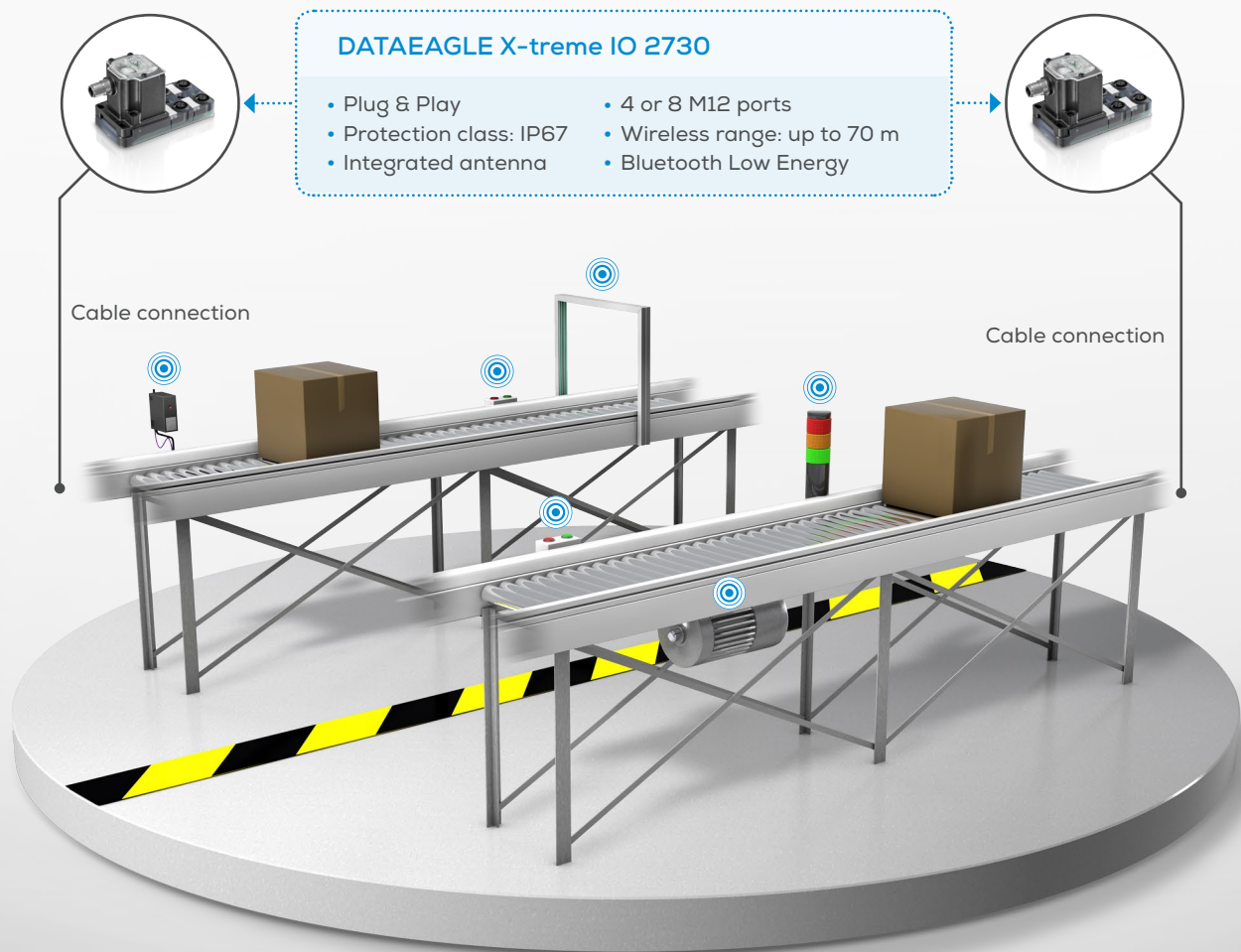


## Cable substitute instead of cable clutter

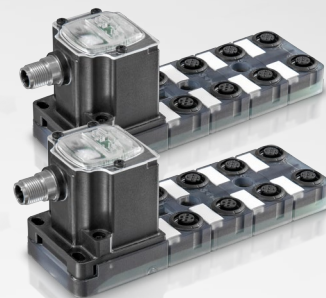
Transmitting analog and digital IO signals easily and reliably by radio

Replacing cables by radio links – this is a technology having been proven for many years particularly in process technology. In practical terms, this means: Easy installation with reduced maintenance effort. Therefore, radio technology is increasingly considered a welcome component for system optimization. The latest wireless IO system from Schildknecht AG, based on Bluetooth Low Energy, has been developed for exactly these applications. As a cable substitute, DATAEAGLE X-treme IO 2730 provides the easiest and most reliable solution for transmitting analog and digital input and output signals in the form of a distribution box. DATAEAGLE X-treme IO 2730 is optionally equipped with 4 or 8 M12 ports. The connections are respectively configured as DI or DO and accordingly AI or AO and send digital or analog signals by radio (Bluetooth Low Energy).



# DATAEAGLE X-TREME IO 2730

## Technical data



### ○ GENERAL

Voltage supply	24 V DC
Connection voltage supply	M12 (male) 5 pole, A-coded, short-circuit and overload protected
Power consumption	100 mA
Fixing	Screw fastening
Protection class	IP67
Temperature range	-20...+70 °C
Conformity	CE, FCC, SRRC, EAC
Weight	150 g
Width	51 mm
Height	150 mm
Depth	65 mm
Colour	Black

### ○ RADIO TECHNOLOGY

Frequency	2,4 GHz Bluetooth (Bluetooth 4.2)
Transmitting power	4 dBm
Range	Up to 70 m

### ○ INTERFACE

IO Interface	4 x / 8 x M12 (female) 5 pole, A-coded
Sensor-system / actuator supply	Max. 1A $\Sigma$
Digital inputs (DI)	PNP
Digital outputs (DO)	PNP (max. 200 mA / output)
Analog inputs (AI)	0-10 V or 4...20 mA
Analog outputs (AO)	0-10 V or 4...20 mA

### ○ VARIANTS

Set 8DI $\leftrightarrow$ 8DO
Set 4DI / 4DO $\leftrightarrow$ 4DI / 4DO
Set 4AI / 4AO $\leftrightarrow$ 4AI / 4AO (0-10 V)
Set 4AI / 4AO $\leftrightarrow$ 4AI / 4AO (4-20 mA)

Further variants available on request

