

DATAEAGLE DE6710

Additional description



This documentation is an additional description of the DATAEAGLE 6710 series.

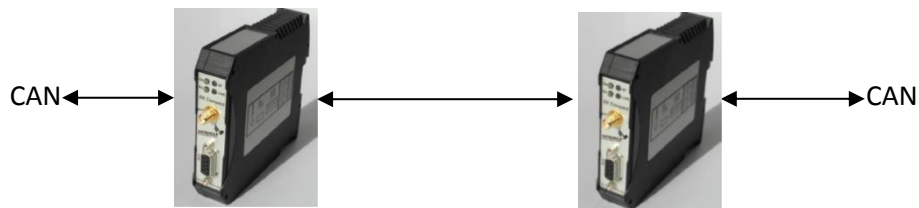
The DATAEAGLE setup software DE Wizard, USB driver and mounting information can be found on the CD.

1. Operating

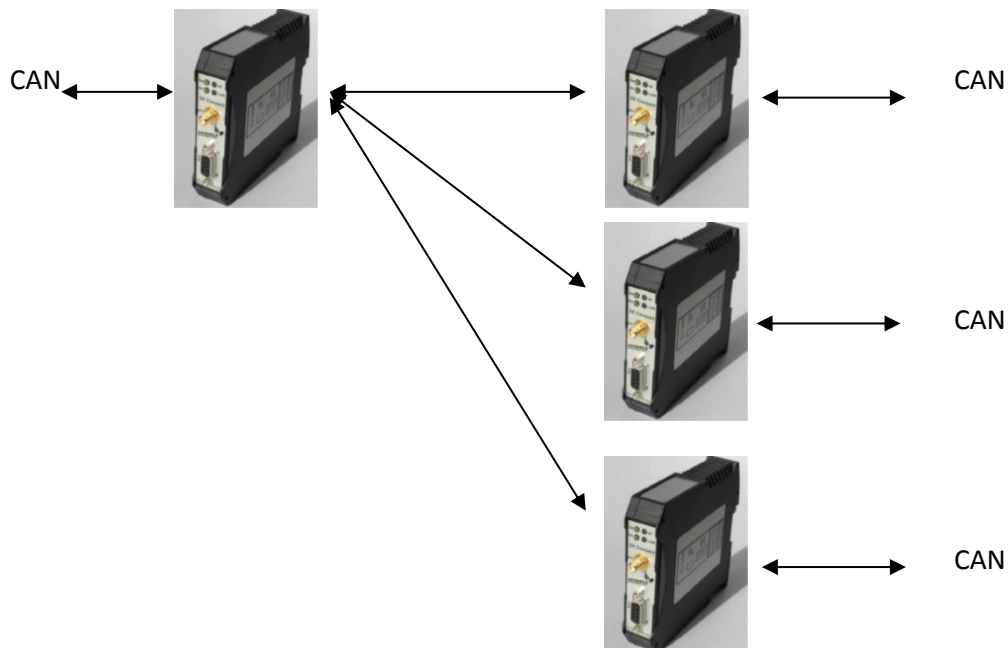
DATEAGLE DE6710 works like a cable replacement for CAN networks. CAN Messages are transferred bidirectional on layer 2 and are application independent. After receiving and confirming the incoming messages, DATEAGLE sends the data over air to the remote side. There exists an “Whitelist Message Management” to protect the airdata from local can message traffic, which is not addressed to the remote side.

DATEAGLE can work in point to point and multipoint mode.

Point to point



Multipoint



Provided are 10kbit/s, 20 kbit/s, 50 kbit/s, 125 kbit/s, 250 kbit/s, 500 kbit/s busspeed and 11 Bit (CAN2.0A) bzw. 29 Bit Format (CAN2.0B).

2. Pinning

Pinning SUB D 9 DATAEAGLE Compact

Pin	Symbol	Funktion
1	--	
2	CAN_L	CAN Low
3	--	
4	--	
5	--	Do not connect
6	--	Do not connect
7	CAN_H	CAN High
8	--	Do not connect
9	--	Do not connect

Pinning M12 A coded DATAEAGLE Extreme

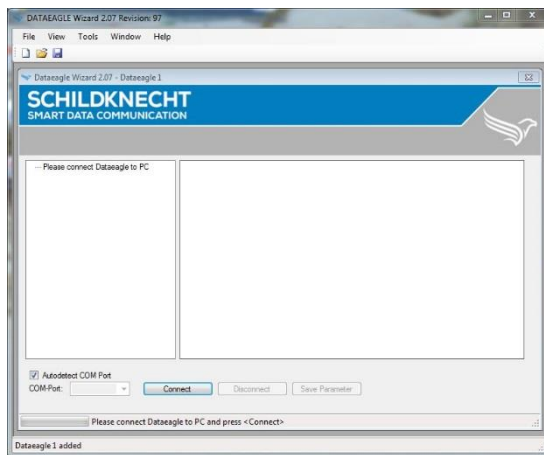
Pin	Symbol	Funktion
1	PE	Shield
2	--	
3	--	
4	CAN_HIGH	CAN High Signal
5	CAN_LOW	CAN Low Signal

3. Setup CAN parameter

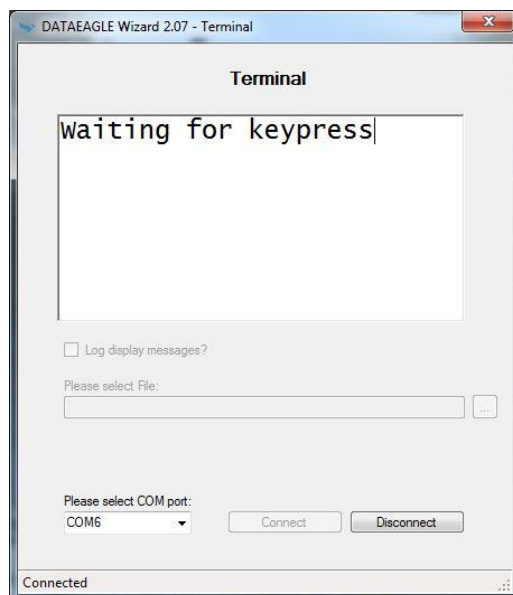
You can set the busspeed with the DATAEAGLE Wizard (on the CD). It is also possible to change the parameters with the terminal menu, which can be started from the DATAEAGLE Wizard.

You have to follow these steps:

- Install the usb driver from CD
There are two usb drivers. New DATAEAGLE devices use the FTDI driver, older types the MCS7840
DATAEAGLE Extreme uses always the FTDI Driver!
- Install the DATAEAGLE Wizard from CD
- After successful installation connect the DATAEAGLE via USB to the PC
- Now start the Software DATAEAGLE Wizard



- Select TOOLS – Terminal from the menubar
- Select the wright COM Port and press the CONNECT button



- Now you can operate the menu with the KEY LEFT, UP, DOWN, RIGHT, ESC and ENTER keys from your keyboard.

Enter is used to confirm the setting , ESC to return to the last menu, UP/Down to change value and Right/Left to change the item.

← Leerlauf →
P:xx S:xx F:xx

Press Key Right to get into the passwordmenu and confirm 000

Medium-
funktionen?

Press Key Right

Geräteadresse
ändern?

Press Key Right

Schnittstellentreiber
ändern?

Press Key Enter to get into the CAN Interface setting menu

Baud: 500k 11 Bit
Whitelist:J

Select your desired CAN busspeed and 11/29 Bit frame and press Enter to confirm

If you wish to use the Whitelist Message Management select J (YES) or N (No).

When choosing "No" , all messages are transferred to the remoteside.

CAN Open Users should use slower Synch- and Heartbeattimesettings, to decrease the airtraffic!!

You can select up to 64 messages (Index 01-64).

First set the Index number and then your desired message ID which should be transferred to the remote side. Press Enter to confirm your input.

If the message should only be transferred if the datacontent is changing select DATACHANGE? J (Yes) or N (No). Please make sure, that your application provide only new data. In some applications a message ID is always expected , even the data has not changed (f.e. Life supervision, node guarding)

